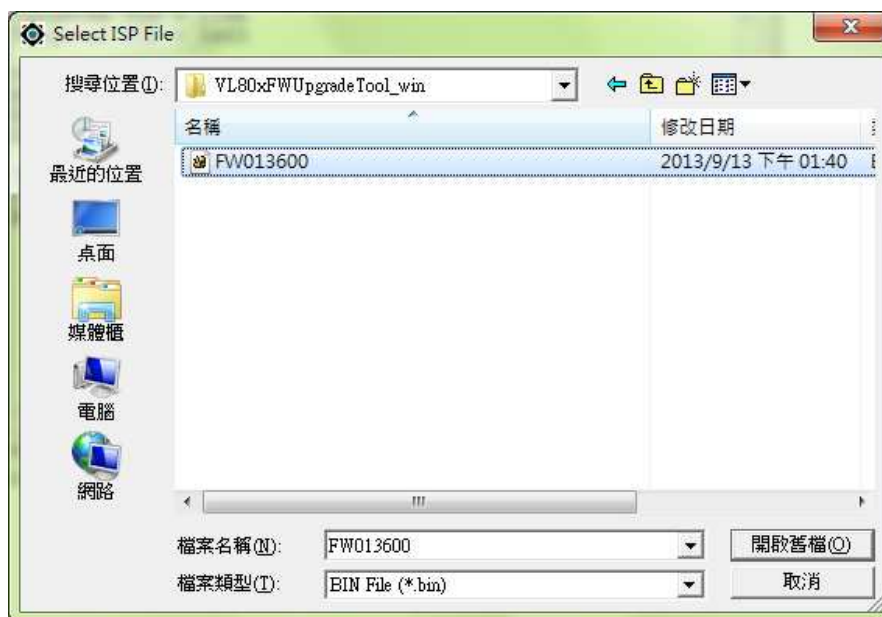
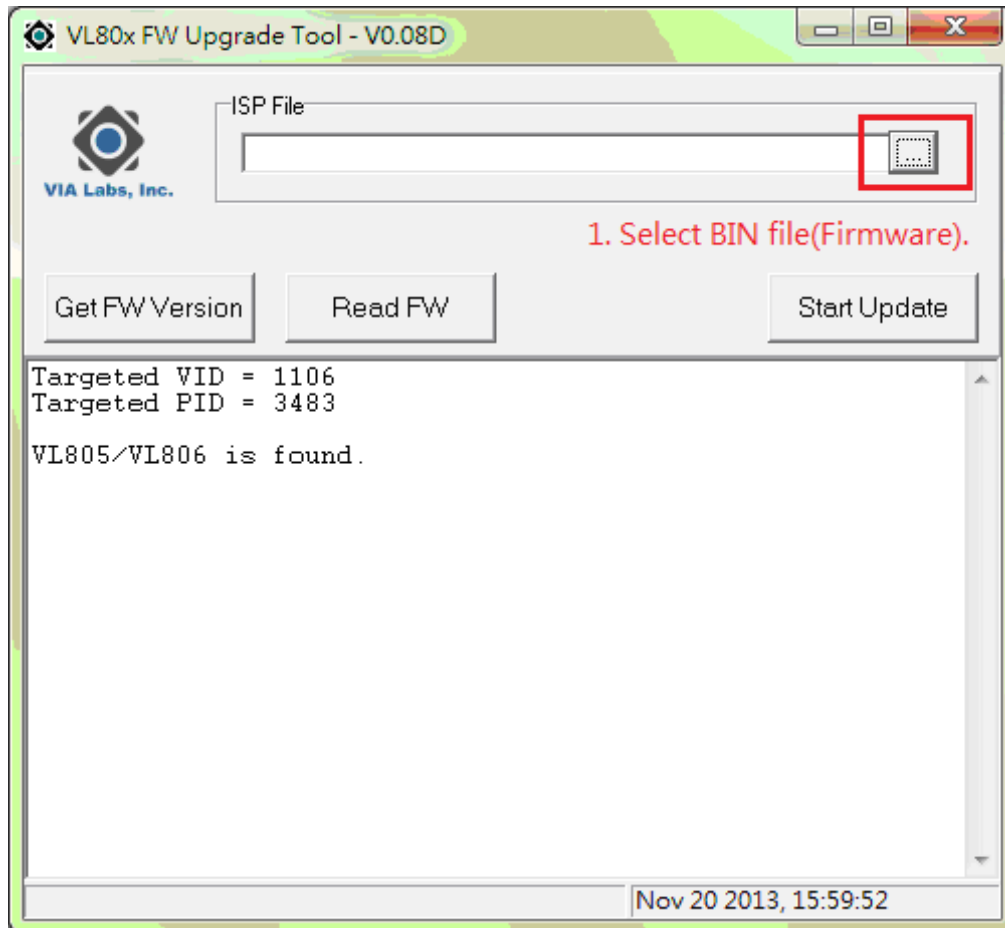
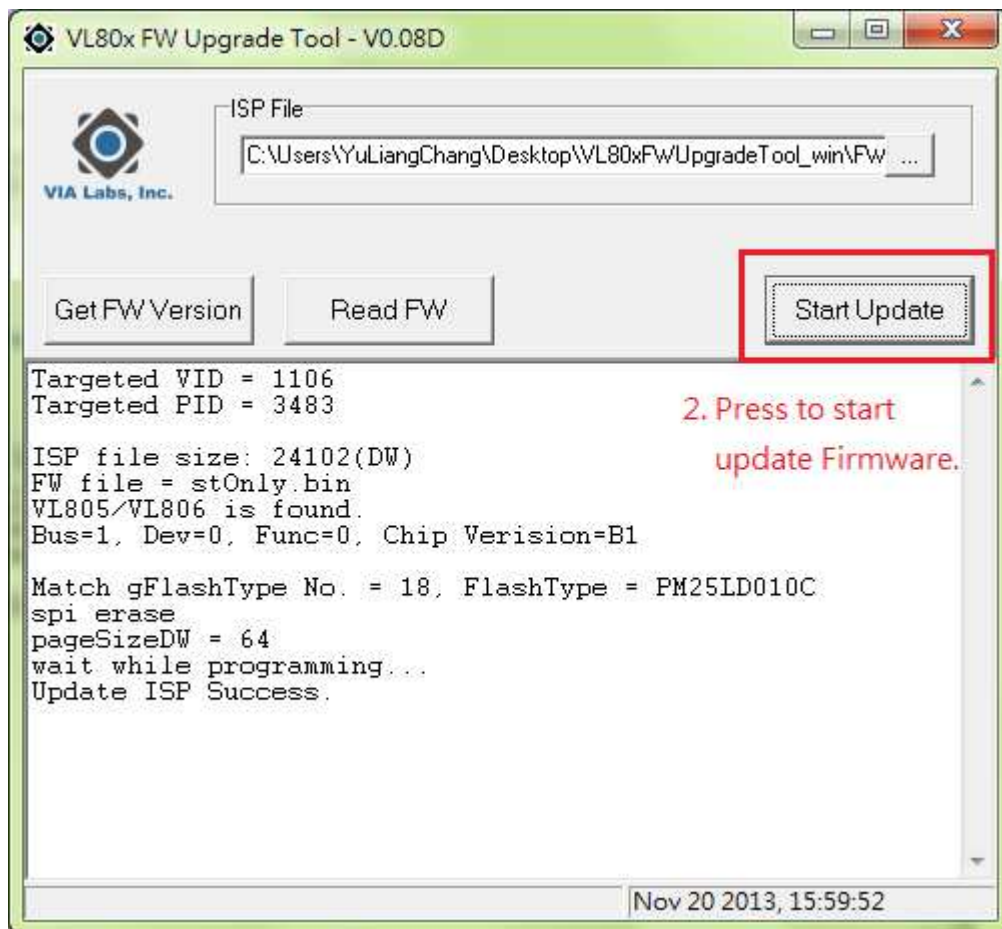


How to update VL80x Firmware.

1. After VL80x firmware update tool is executed the update window will pop up. Click the button in ISP box to select firmware .bin file.



2. Click "Start Update" to begin updating the firmware.



3. If the firmware update is successful, the words "Update ISP Success" will append at the end of the displayed message.

```
Match gFlashType No. = 18, FlashType = PM25LD010C  
spi erase  
pageSizeDW = 64  
wait while programming...  
Update ISP Success.
```

4. AC power cycle

In order to make the newly updated firmware become effective, it is necessary to shut down the system, remove AC power, wait few seconds, then restart the system.

5. Check current firmware version by clicking “Get FW Version”

